



HD Mini DVR

User Manual

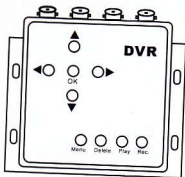
Contents

Instruction.	1
Installation.	2
Before Use.	3
Record.	5
Record Setting.	5
Alarm Setting.	8
Delete.	9
Format.	9
Parameter.	9

HD Mini DVR

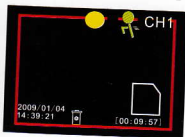
Instruction

Keyboard



Key	Function
▲	Move up; turn on voice
▼	Move down; turn down voice
◀	Move left
▶	Move right; switch channel 1 to channel 2
ok	Confirm; Preview: start/stop motion detection
Menu	Turn back
Delete	Delete the files, video or picture in the PLAYBACK
Play	Playback, turn back
Rec	Record directly

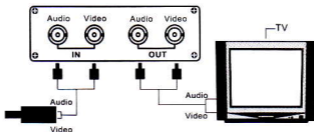
Screen



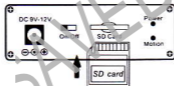
●	Yellow: Pre. Record function is on Red: It is recording now
♣	Green: Motion detection is on Red: Triggered and begin to recording
CH1	Which channel it is now
2009/01/04 14:39:21	Date/time stamps: Year, month and day Time (the seconded line)
♻️	Overwrite function is on
💻	SD Card has been put in
[00:09:57]	How long the SD Card can record

Installation

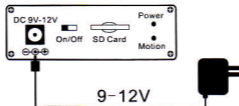
1. Connect DVR with camera and TV



2. Insert SD card in DVR



3. Connect with Power adapter.



4. Turn on DVR

HD Mini DVR

Before use


1. Time setting

Press "Menu" to get in the software




Choose "  " to get in the SYSTEM SETTING



Choose "  " to get in the Date/Time setting

HD Mini DVR

2. Select your language

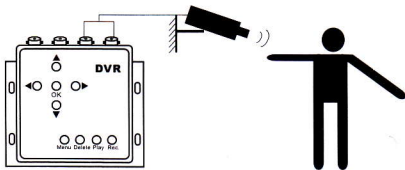
Choose "  " to select your language



3. Choose " " to set DVR mode for PAL or NTSC

Attn. : Please set DVR in the same mode as your TV or monitor, otherwise, the pictures on TV will unusual.

4. Set your camera face to the monitor place

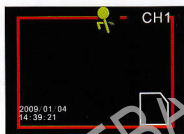


HD Mini DVR

Record

1. Motion detection trigger recording

In the stand by mode, press "OK" to active motion detection. If there is something moving in the red line area, DVR will start recording.



2. Manually start/stop to record


Press the REC. Key on the keyboard to start recording, press again to stop.

Recorder Setting

Press "Menu" to get in the software



Recorder Setting

Choose "  " to do recorder settings



Motion detection area and sensitivity setting
press "OK" to set motion detect area and detect sensitivity.
When you set sensitivity at 8, DVR will record all the time
If you set it at 1, DVR will start recording hardly.



Recording time
Set recording time from 30 seconds to 30 minutes per section
once DVR was triggered to record.



Frame setting
Set frame from 1f/s to 30f/s. Lower frame will help you save
more memory.

Recorder Setting



Schedule setting

In this mode, press "OK" to set. Then, press "▼" to do details setting. You can set 4 groups time to start/stop recording automatically.



This function is not available on this version (only for 2ch one)



Record overwrite

When you set it on, it will overwrite when the memory is full. Otherwise, it will stop recording.



Pre. Record

Generally speaking, when the first video finish and start recording the second video, there will lose 2-3 seconds for saving files. If you set this function on, it will helps solve this problem. (*Recommend to set it on)



Time stamp

While you set it on, the time stamp will show on the record files. (*Recommend to set it on)



Recording type

It can set DVR to record video or take photos when it be triggered

Alarm Setting

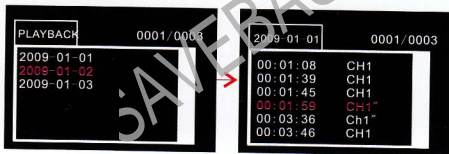


This function is not available on this version

Play Back



1. Choose " " to get in the "PLAYBACK" and you can see



(1) Press "▲" or "▼" to get into the files, of which the video you want to play is in. (Notes: The files named by the recording time and date)

(1) Press "▲" or "▼" to choose the one you want to play by recording time. (Notes: {00:01:59 CH1"} means picture, {00:01:08 Ch1} means video)

2. In the monitoring model, press the "Play" button on the device to play the video.

HD Mini DVR

Delete

While in the "PLAYBACK" you can press "Delete" key on the device to delete the files of video or picture.

Format

While you get into the "SYSTEM SETTING", please choose



to format.

Parameter

Video	
Format	Mpeg-4 Video for AVI
Resolution	640*480
Frame	30f/s
Mode	Pal/Ntsc optional
Memory	
Media	SD Card for 16GB
Other media	Support SDHC
Working theory	
Auto recording	Motion detective
Manual recording	Keyboard
Fixed time recording	Support
Power and Battery	
Electricity Input	DC 9V-12V
Working electricity	<150MA
Power expend	<2W
Language	
English, Chinese, German, French, Spanish, Portuguese, Italian, Japanese, Dutch, Russian	